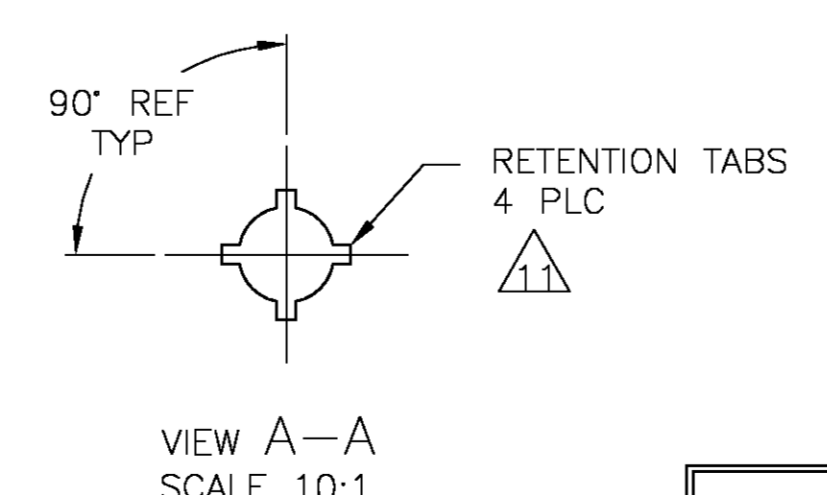
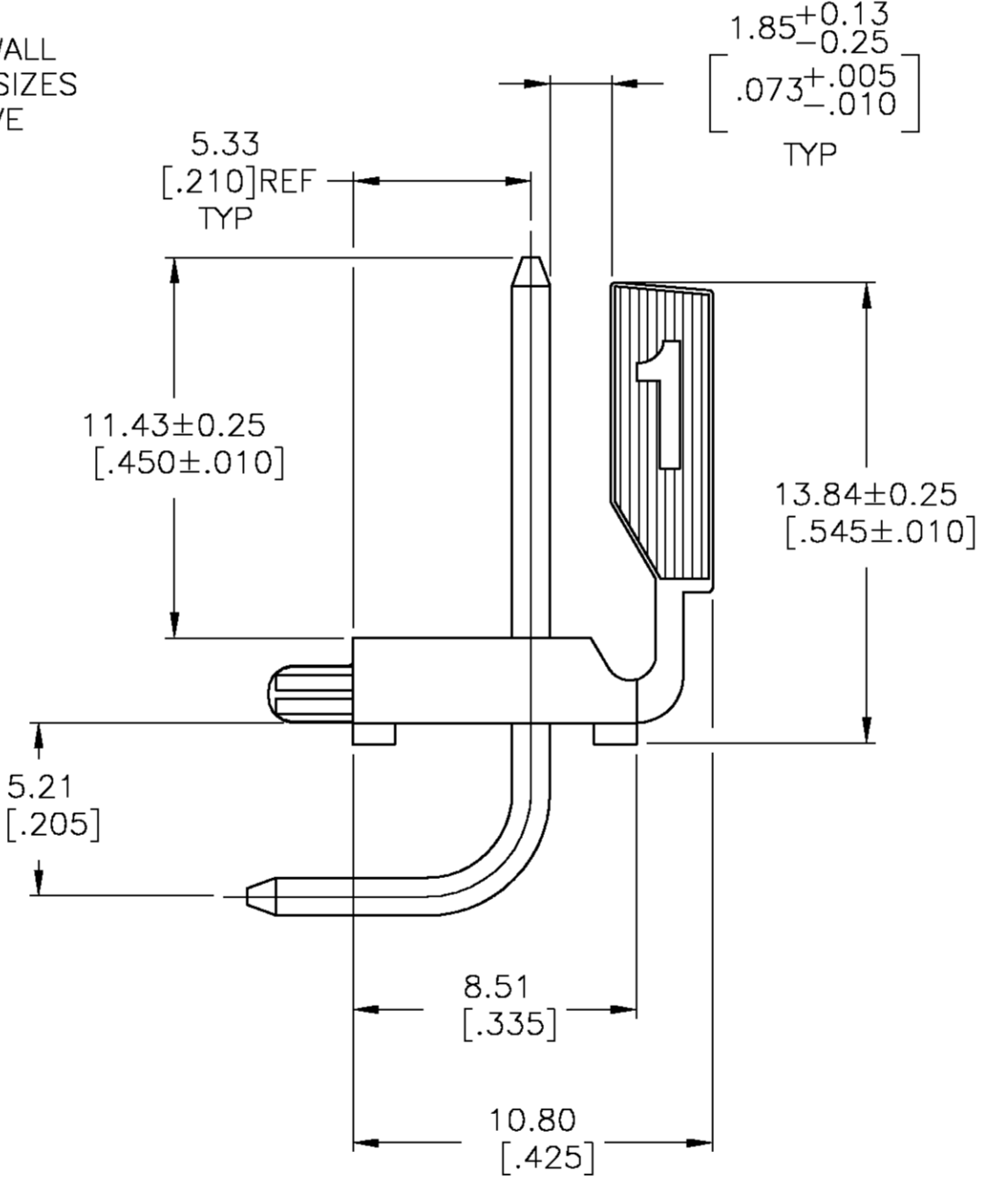
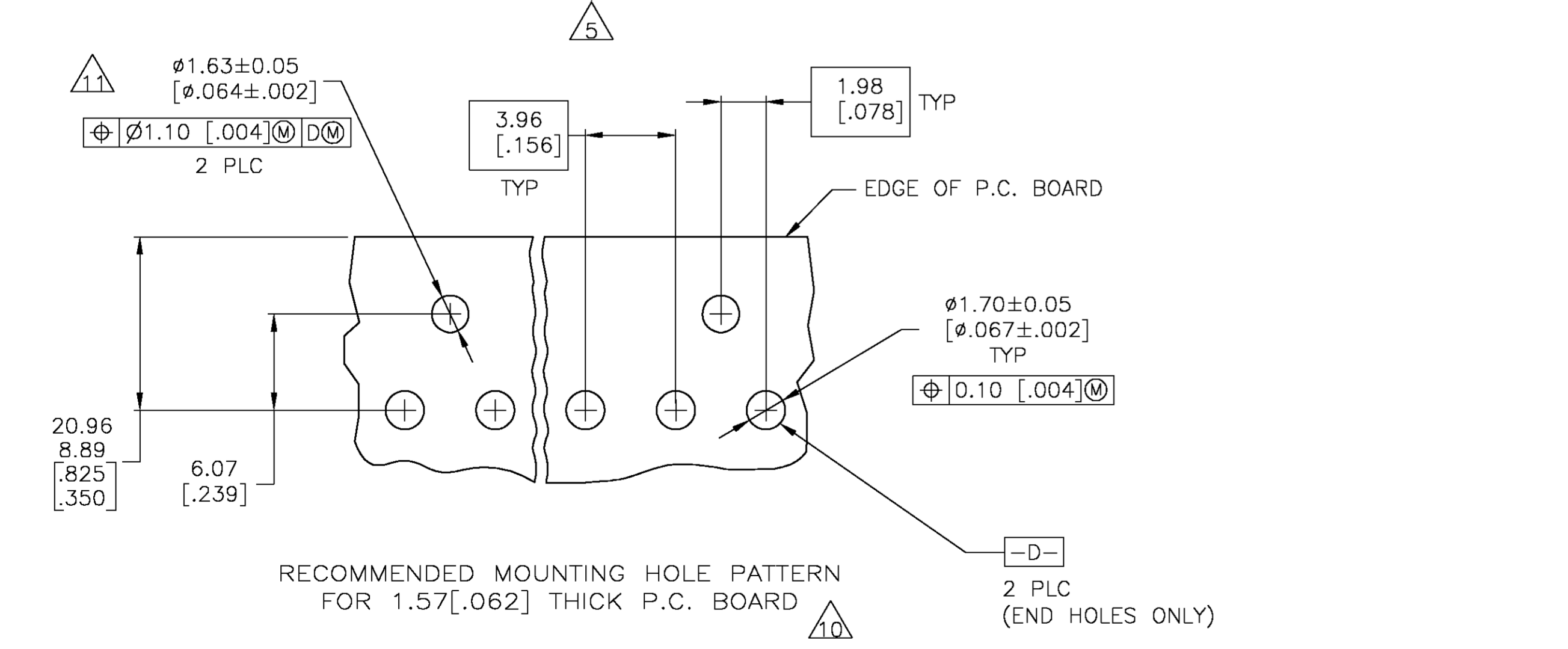
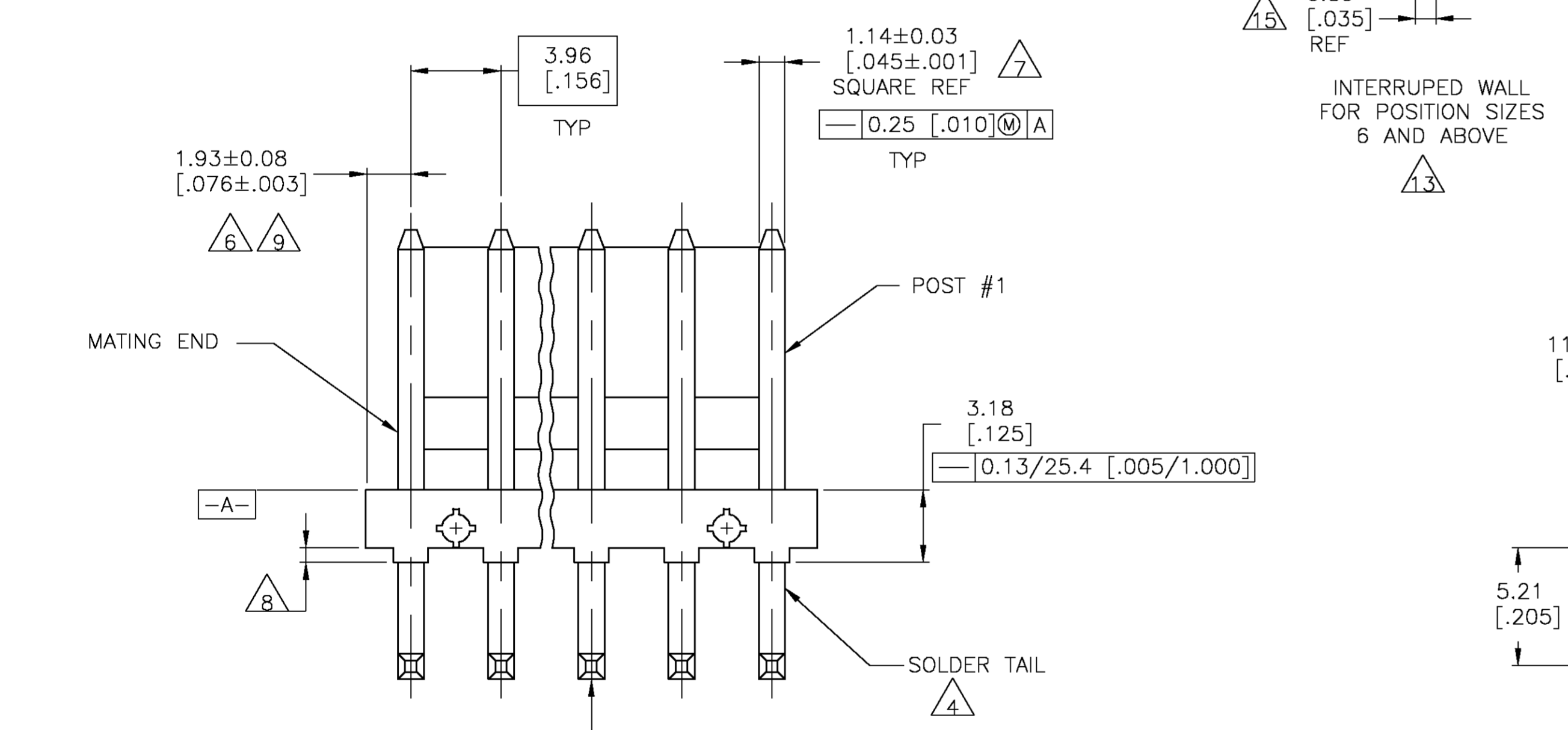
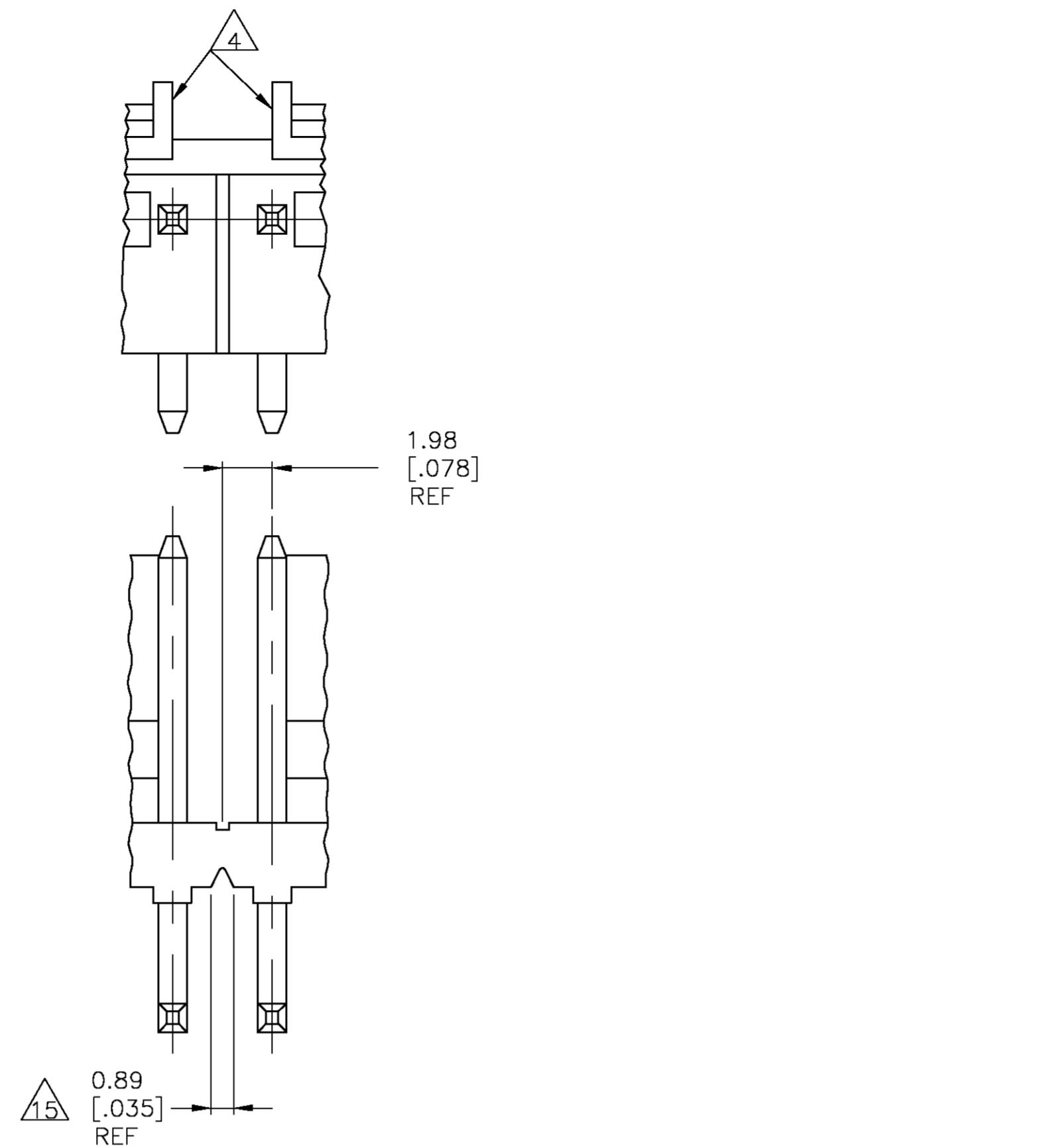
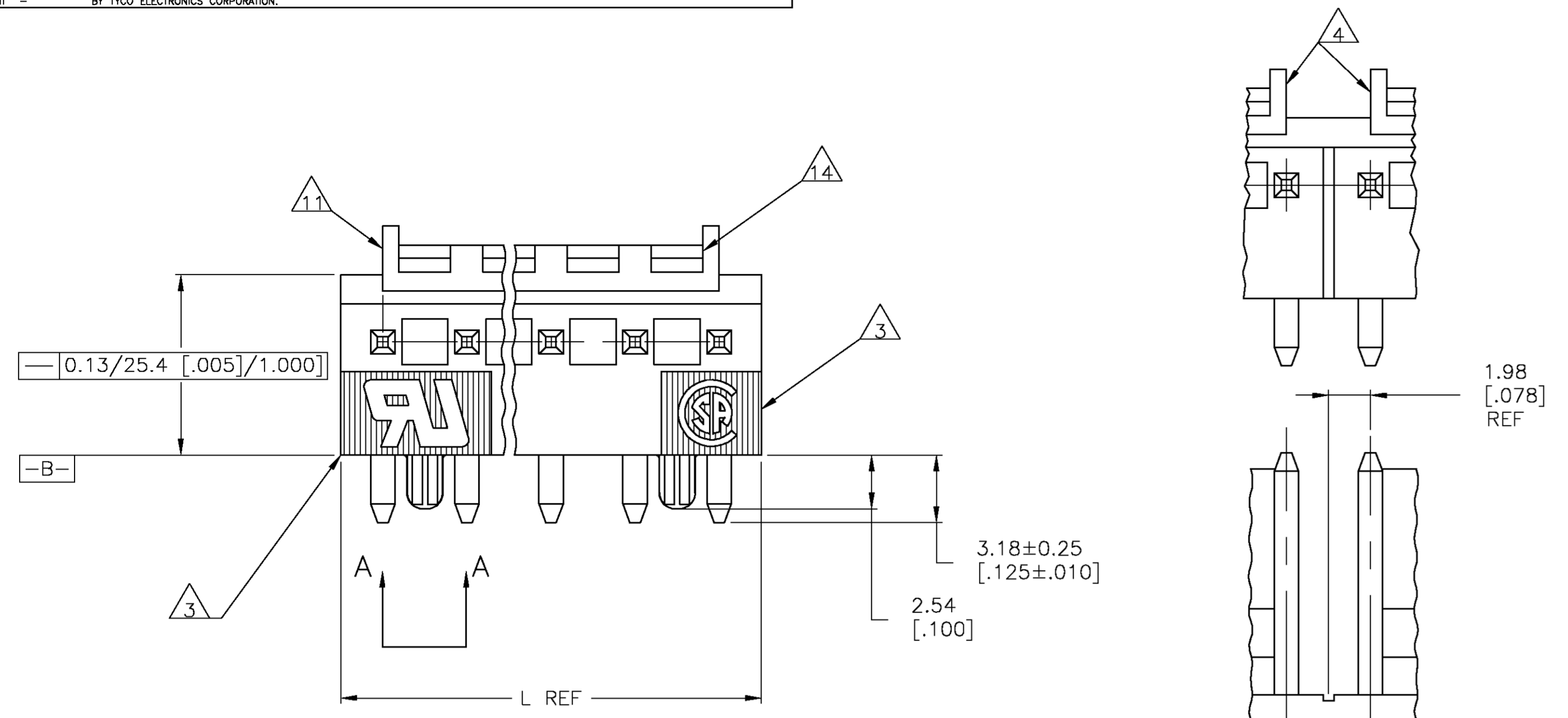


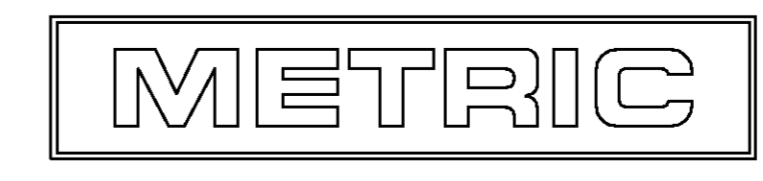
- 1 MATERIAL
HOUSING: THERMOPLASTIC POLYESTER, GLASS FILLED, UL94V-O.
POST: COPPER ALLOY
- 2 FINISH
HOUSING: NATURAL
POST: BRIGHT TIN-LEAD (93/7) PLATE, 0.00380-0.00880 [0.00150-0.000350] THK OVER NICKEL UNDERPLATE, 0.00130 [0.000050] MIN THK.
- 3 UL MARKING MAY NOT APPEAR ON THE 2 OR 3 POSITION SIZES.
CSA MARKING MAY NOT APPEAR ON THE 2 POSITION SIZE.
- 4 POST SOLDER TAILS COMPLY WITH AMP SOLDERABILITY SPEC 109-11-2.
- 5 POST WITHSTANDS 13.34N [3 LB] MIN AXIAL FORCE IN EITHER DIRECTION WITHOUT DISLODGING.
- 6 APPLIES AT -A-.
- 7 APPLIES WHEN THE HEADER IS STRAIGHT.
- 8 PLASTIC PROJECTIONS PERMITTED IN THIS ZONE.
- 9 COORDINATE DIMENSIONS APPLIES FROM THE CENTER OF THE ACTUAL FEATURE.
- 10 SOLDER SIDE OF BOARD IS SHOWN.
- 11 THE RETENTION TABS PROVIDE A ONE-TIME INTERFERENCE FIT IN THE 1.63 [0.064] DIAMETER BOARD HOLE FOR HEADER ASSEMBLY RETENTION DURING SOLDERING. FOUR TABS PER PEG, TWO PEGS PER HEADER ASSEMBLY (ONE PEG ONLY FOR 2 POSITION SIZE).
- 12 DIMENSIONS IN BRACKETS ARE IN INCHES.
- 13 ALL POSITION SIZES HAVE THE BACKWALL NOTCHED ON BOTH ENDS AS SHOWN. THE 2 THRU 5 POSITION SIZES HAVE SOLID BACKWALLS. POSITION SIZES 6 AND ABOVE HAVE AN INTERRUPTED BACKWALL AT VARIOUS LOCATIONS (SEE TABLE FOR INTERRUPTION(S) LOCATIONS).
- 14 EDGE OF POLARIZING LOCK WALL TO BE IN LINE WITH CENTERLINE OF ADJACENT POST WITHIN ±0.13 [0.005]
- 15 NOTCH SHOWN MAY OR MAY NOT APPEAR.
- 16 FINISH
HOUSING: NATURAL
POST: MATTE TIN PLATE, .000150" MIN THICK OVER NICKEL.

THIS DRAWING IS UNPUBLISHED. RELEASED FOR PUBLICATION.
COPYRIGHT BY TYCO ELECTRONICS CORPORATION. ALL RIGHTS RESERVED.

LOC		DIST		REVISIONS			
CM	00			REV	DESCRIPTION	DATE	BY
		J	EC	06	JUN 05	BSV	DB



POSITION	POSITION	POST	POST	POSITION	POSITION
4&5, 7&8, 11&12, 14&15	71.20	[2.803]	18	4-644617-8	
4&5, 7&8, 10&11, 13&14	67.23	[2.647]	17	4-644617-7	
4&5, 8&9, 12&13	63.27	[2.491]	16	4-644617-6	
4&5, 8&9, 11&12	59.31	[2.335]	15	4-644617-5	
4&5 7&8, 10&11	55.35	[2.179]	14	4-644617-4	
4&5 7&8, 10&11	51.38	[2.023]	13	4-644617-3	
4&5, 8&9	47.42	[1.867]	12	4-644617-2	
4&5, 7&8	43.46	[1.711]	11	4-644617-1	
3&4, 7&8	39.50	[1.555]	10	4-644617-0	
3&4, 6&7	35.53	[1.399]	9	3-644617-9	
4&5	31.57	[1.243]	8	3-644617-8	
4&5	27.61	[1.087]	7	3-644617-7	
3&4	23.65	[.931]	6	3-644617-6	
NONE	19.69	[.775]	5	3-644617-5	
NONE	15.72	[.619]	4	3-644617-4	
NONE	11.76	[.463]	3	3-644617-3	
NONE	7.80	[.307]	2	3-644617-2	
4&5, 7&8, 11&12, 14&15	71.20	[2.803]	18	1-644617-8	
4&5, 7&8, 10&11, 13&14	67.23	[2.647]	17	1-644617-7	
4&5, 8&9, 12&13	63.27	[2.491]	16	1-644617-6	
4&5, 8&9, 11&12	59.31	[2.335]	15	1-644617-5	
4&5 7&8, 10&11	55.35	[2.179]	14	1-644617-4	
4&5 7&8, 10&11	51.38	[2.023]	13	1-644617-3	
4&5, 8&9	47.42	[1.867]	12	1-644617-2	
4&5, 7&8	43.46	[1.711]	11	1-644617-1	
3&4, 7&8	39.50	[1.555]	10	1-644617-0	
3&4, 6&7	35.53	[1.399]	9	644617-9	
4&5	31.57	[1.243]	8	644617-8	
4&5	27.61	[1.087]	7	644617-7	
3&4	23.65	[.931]	6	644617-6	
NONE	19.69	[.775]	5	644617-5	
NONE	15.72	[.619]	4	644617-4	
NONE	11.76	[.463]	3	644617-3	
NONE	7.80	[.307]	2	644617-2	



THIS DRAWING IS A CONTROLLED DOCUMENT.		DATE	BY			
DIMENSIONS: mm [INCHES]		26 OCT 93	B. LEWIS			
TOLERANCES UNLESS OTHERWISE SPECIFIED:		DATE	BY	Tyco Electronics Corporation		
0 PLC ± -		03 NOV 93	R. SWING	Harrisburg, Pa 17105-3608		
1 PLC ± -		NAME D. CLARK PRODUCT SPEC	APPLICATION SPEC	MTA-156 HEADER ASSEMBLY, POLARIZED LOCK, RIGHT ANGLE FRONT BEND, .045 SQUARE POST, TIN-LEAD PLATED, WITH RETENTION PEGS		
2 PLC ± -				SIZE	DATE CODE	DRAWING NO
3 PLC ± -				—	—	A1 00779 C=644617
4 PLC ± -				WEIGHT	—	—
ANGLES ± -		CUSTOMER DRAWING				